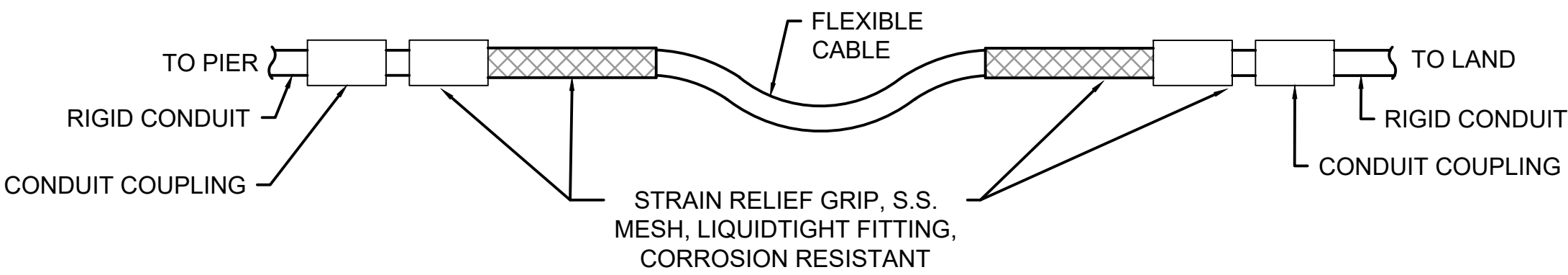
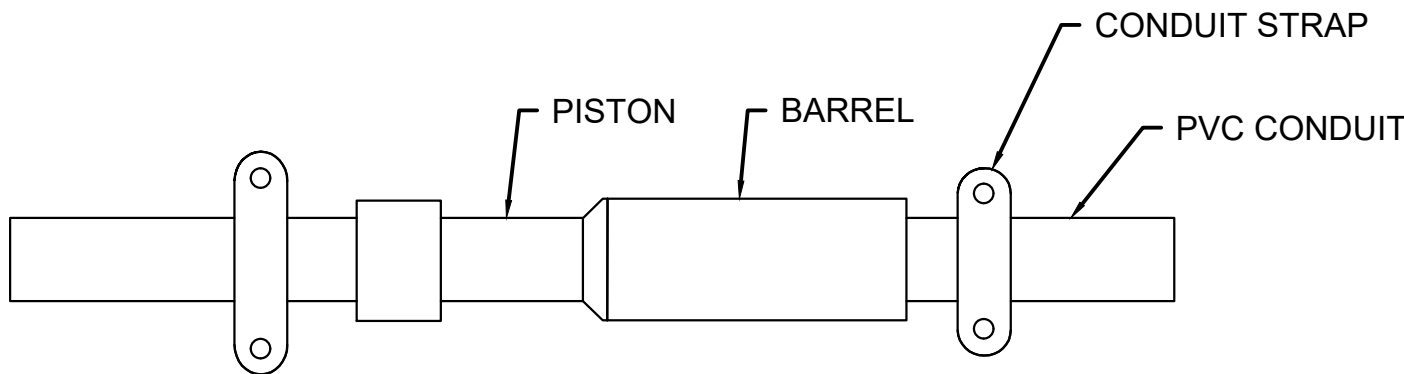


TYPICAL FIXTURE ELEVATION
NO SCALE



NOTE:
FLEXIBLE CABLE TO ALLOW FOR LOCAL TIDAL VARIATIONS (APPROX. 8'). COORDINATE WITH FLOATING PIER REQUIREMENTS.

CABLE SUPPORT DETAIL
NO SCALE



- NOTES:**
1. THE EXPANSION FITTING SHOULD BE MOUNTED SO THAT THE PISTON CAN TRAVEL IN A STRAIGHT LINE WITHIN THE BARREL. IF ALIGNMENT IS NOT STRAIGHT, THE PISTON WILL BIND AND PREVENT THE FITTING FROM WORKING PROPERLY.
 2. THE EXPANSION FITTING BARREL MUST BE CLAMPED SECURELY WHERE-AS THE CONDUIT IS MOUNTED LOOSELY SO THAT IT CAN SLIDE FREELY DURING EXPANSION AND CONTRACTION.
 3. NONMETALLIC CONDUIT STRAPS SUITABLE FOR THIS PURPOSE, MUST BE USED TO ALLOW THE CONDUIT TO MOVE FREELY DURING EXPANSION AND CONTRACTION WHILE PROPERLY SECURING IT.

EXPANSION FITTING DETAIL
NO SCALE

ANSI D (34"x22")

Digitally signed by Andrew K Gibbs
Date: 2026.02.17 07:33:59-06'00'

M

MOTT
MACDONALD

930 Main Campus Drive,
Suite 200
Raleigh, NC 27606
License No. F-0669
T +1 (919) 552 2253
F +1 (919) 552 2254
www.mottmacamericas.com

GRAPHIC SCALE

PROJECT ENGINEER

NORTH CAROLINA

PROFESSIONAL SEAL

041677

ANDREW K. GIBBS

ANDREW K. GIBBS, P.E.
NC LICENSE: 041677

Designed By	RICHARD FERREIRA	County	HYDE COUNTY		
Entered By	RICHARD FERREIRA	Division	FERRY DIVISION		
Project Engineer	ANDREW GIBBS	Plan Date	1-14-2026		
Project Manager	ALLISON THORBURN				
Rev.	Date	Drawn	Description	Ch'k'd	App'd

NCDOT PASSENGER FERRY
DOCK REPLACEMENT -
OCRACOKE ISLAND

E-900
ELECTRICAL LIGHTING DETAILS